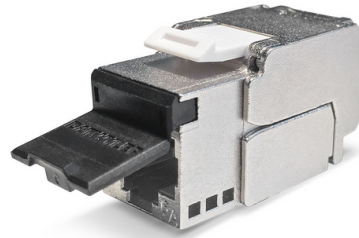
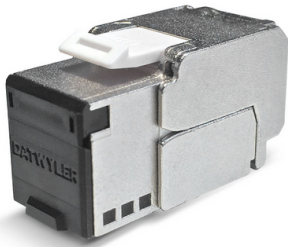


# KS-TC Plus Cat.6<sub>A</sub> (IEC) tool-less, compact

RJ45 module, shielded, Category 6<sub>A</sub> (IEC)



KS-TC Plus Cat.6<sub>A</sub> (IEC) RJ45 module, tool-less, shielded, with dust shutter



## DESCRIPTION

For the transmission of digital and analogue voice-, video- and data signals.  
The KS-TC Plus RJ45 module is specified up to 500 MHz in compliance with the component standard IEC 60603-7-51.  
Enables acceptance testing with high spare capacity at the limit values stipulated for Class E<sub>A</sub> Permanent Links when combined with shielded Category 6<sub>A</sub>, 7, 7<sub>A</sub> and 8 data cables. Therefore it is applicable for 10-gigabit Ethernet transmissions in accordance with IEEE 802.3.  
Useable for Power over Ethernet, PoE+ and 4PPoE application.

Solid zinc die casting housing with mounting clip for installation in Keystone panels and outlets.  
Contact spring with phosphor bronze alloy, plated with gold.  
For connecting the wires a wire manager is used in combination with two integrated moveable housing wings for tool-less IDC connections. Only for cutting the wires a plane wire cutter is necessary.  
The 360° metal shield ensures a durable fully shielded environment.  
The module comes with an integrated strain relief, no cable tie is needed.  
The module is re-usable.  
Potential balancing possibility directly at the module when needed.  
With removable black dust shutter. Other colours available as accessories sets.

## MECHANICAL PROPERTIES

Solid copper wire:	0.42 mm (AWG 26) to 0.65 mm (AWG 22)
Re-connection:	for AWG 22, AWG 23 and AWG 24 when using the same or bigger wire diameter
Stranded copper wire:	AWG 26/7 up to AWG 23/7, re-usable once
Diameter over insulation:	0.70 mm to 1.40 mm (1.60 mm)
Temperature range	storing: -40° C to +70° C during installation: -10° C to +60° C in operation: -20° C to +60° C

## GENERAL PROPERTIES

Termination: Wire guides with colour coding in accordance with T568-A and B

## STANDARDS

Cat./Class	Cat.6 <sub>A</sub> / Class E <sub>A</sub>
Standards	IEC 60603-7-51 (Cat.6 <sub>A</sub> shielded, 500 MHz) IEC 60512-99-002 (4PPoE) ISO/IEC 11801:2002 / Amd.2:2010 EN 50173-1 TIA/EIA 568-B.2-10:2008

## VERSIONS

Article No.	Product	Colour	PU
418069	RJ45 module KS-TC Plus Cat.6 <sub>A</sub> (IEC) tool-less, shielded, with dust shutter	silver	12 pcs.